



Certificate of Analysis

Customer:

Lapp Farm
242 Esbenshade Rd
Ronks, PA 17572

Sample ID: 211007020**Order Number: CB211007011****Sample Name: Hawain Haze**

Collected Date:

External Sample ID:

Received Date: **10/7/2021**

Batch Number:

COA Released: **10/9/2021**Product Type: **Flower**Sample Type: **Flower**

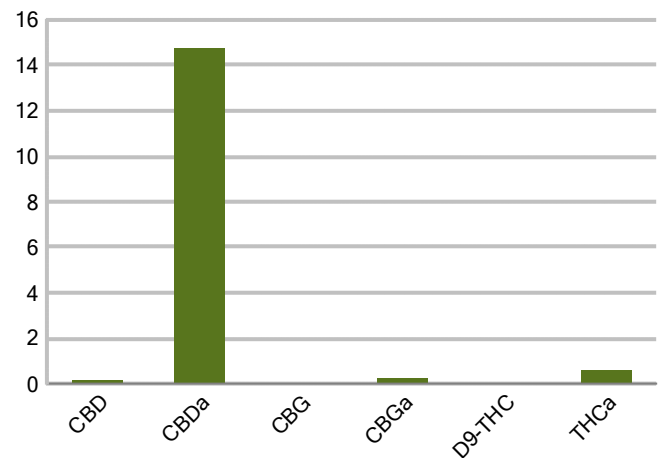
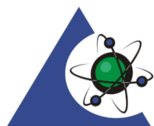
Comments:

CANNABINOID PROFILE

Analyte	LOQ (%)	% weight	mg/g
CBC	0.01	ND	ND
CBD	0.01	0.139	1.391
CBDa	0.01	14.76	147.6
CBDV	0.01	ND	ND
CBG	0.01	0.029	0.292
CBGa	0.01	0.257	2.572
CBN	0.01	ND	ND
d8-THC	0.01	ND	ND
d9-THC	0.01	0.025	0.247
THCa	0.01	0.614	6.136
Total Cannabinoids		15.83	158.3
Total Potential THC		0.563	5.628
Total Potential CBD		13.09	130.9
Total Potential CBG		0.255	2.550



Cannabinoids (% weight)

**Ratio of Total Potential CBD to Total Potential THC 23.25 : 1****Ratio of Total Potential CBG to Total Potential THC 0.45 : 1****Total Cannabinoids refers to the sum of all cannabinoids detected.***Total Potential CBD = (0.877 x CBDa) + CBD. *Total Potential THC = (0.877 x THCa) + THC. *Total Potential CBG = (0.877 x CBGa) + CBG.***Total Potential THC/CBD are calculated to take into account the loss of an acid group during decarboxylation.*

PJLA
Testing
Accreditation #109588

Authorized Signature

Laboratory Manager

Jamie Hobgood

10/09/2021 7:26 PM

DATE

This product has been tested by CannaBusiness Laboratories using validated testing methodologies and a quality system. Values reported relate only to the product tested. CannaBusiness Laboratories makes no claims as to the efficacy, safety or other risks associated with any detected or non-detected levels of any compounds reported herein. This Certificate shall not be reproduced except in full, without the written permission of CannaBusiness Laboratories. Uncertainty information is available on request. Photo is of sample received by the lab and may vary from final packaging. The results apply to the sample as received. ISO/IEC 17025:2017 Accredited.



Sample ID: 211007020
Sample Name: Hawain Haze
Sample Type: Flower

Certificate of Analysis

Customer

Lapp Farm
242 Esbenshade Rd
Ronks, PA 17572



Overall Batch Results	
Pesticide	Moisture Content
Potency	Water Activity
Mycotoxins	Heavy Metals
Microbial Screen	Residual Solvents
Terpenoids	

Sample Name: Hawain Haze
Sample ID: 211007020
Product Type: Flower
Sample Type: Flower
Collected Date:
Received Date: 10/07/2021
Batch Number:
Batch Size:
Sample Size:
COA released: 10/09/2021 7:26 PM

Potency (mg/g)			
Date Tested: 10/08/2021		Method: CB-SOP-028	
Instrument:			
0.563 % Total THC	13.09 % Total CBD	15.83 % Total Cannabinoids	158.3 mg/g Total Cannabinoids

Analyte	Result	Units	LOQ	Result	Units
CBC (Cannabichromene)	ND	%	0.010	ND	mg/g
CBD (Cannabidiol)	0.139	%	0.010	1.391	mg/g
CBDa (Cannabidiolic Acid)	14.76	%	0.010	147.6	mg/g
CBDV (Cannabidivarin)	ND	%	0.010	ND	mg/g
CBG (Cannabigerol)	0.029	%	0.010	0.292	mg/g
CBGa (Cannabigerolic Acid)	0.257	%	0.010	2.572	mg/g
CBN (Cannabinol)	ND	%	0.010	ND	mg/g
D8-THC (D8-Tetrahydrocannabinol)	ND	%	0.010	ND	mg/g
D9-THC (D9-Tetrahydrocannabinol)	0.025	%	0.010	0.247	mg/g
THCa (Tetrahydrocannabinolic Acid)	0.614	%	0.010	6.136	mg/g



Authorized Signature

J. Hobgood
Laboratory Manager

Jamie Hobgood

10/09/2021 7:26 PM

Date Time

NT = Not tested, ND = Not detected; LOQ = Limit of Quantitation; <LOQ = Detected; >ULOL = Above upper limit of linearity; CFU/g = Colony forming units per 1 gram; TNTC = Too numerous to count

CannaBusiness Laboratories
License # P-0059: (859)-514- 6999 <https://www.cannabusinesslabs.us>

This product has been tested by CannaBusiness Laboratories using validated testing methodologies and a quality system. Values reported relate only to the product tested. CannaBusiness Laboratories makes no claims as to the efficacy, safety, or other risks associated with any detected or non-detected levels of any compounds reported herein. This Certificate shall not be reproduced except in full, without the written permission of CannaBusiness Laboratories. Uncertainty information is available on request. Photo is of sample received by the lab and may vary from final packaging. The results apply to the sample as received. ISO/IEC 17025:2017 Accredited.