



CERTIFICATE OF ANALYSIS

KannaWorx Industries LLC

49 Mountain View Terrace
Walden, NY 12586
chris@kannaworxindustries.com
(845) 779-1291
Lic. #: HEMP-G-000527

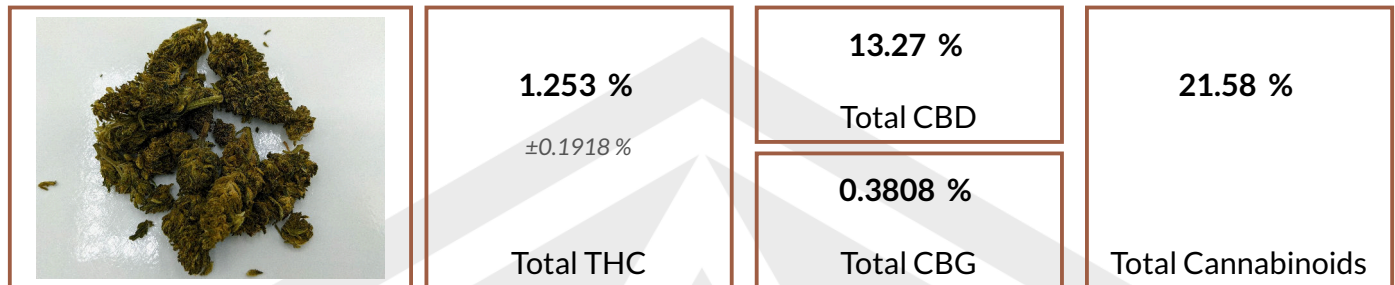
Sample: 210816TRI001.01

Sample Description: 1008

Sample Received: 08/16/2021; Report Created: 08/18/2021;

PG D8 Flower

Plant, Flower - Cured



Cannabinoids

Date Analyzed: 08/18/2021

Complete

Analyte	LOD %	LOQ %	Dry Weight %	Dry Weight mg/g
THCa	0.006420	0.02140	0.1309	1.309
Δ9-THC	0.006420	0.02140	1.139	11.39
Δ8-THC	0.006420	0.02140	4.459	44.59
THCVa	0.006420	0.02140	ND	ND
THCV	0.006420	0.02140	ND	ND
CBDa	0.006420	0.02140	10.42	104.2
CBD	0.006420	0.02140	4.135	41.35
CBDVa	0.006420	0.02140	0.04442	0.4442
CBDV	0.006420	0.02140	ND	ND
CBN	0.006420	0.02140	0.05577	0.5577
CBGa	0.006420	0.02140	0.2738	2.738
CBG	0.006420	0.02140	0.1404	1.404
CBCa	0.01247	0.04155	0.4551	4.551
CBC	0.006420	0.02140	0.3069	3.069
CBL	0.006420	0.02140	0.02309	0.2309
Total			21.58	215.8

SOP:102, AOAC 2018.11 (Modified); UHPLC-PDA. Total THC = THCa * 0.877 + Δ9-THC; Total CBD = CBDa * 0.877 + CBD; Total CBG = CBGa * 0.878 + CBG. Pass/Fail THC criteria, if listed, is based upon USDA hemp testing guidelines for pre-harvest hemp clearance (total THC - uncertainty ≤ 0.3% THC). Dry weight percent of cannabinoids, if listed, is calculated using the dried weight determined by the moisture content prior to extraction, indicated below. Moisture: 8.98%

**TRI-
CHOME
ANALY-
TI-CAL**

6000 Commerce Parkway Suite I
Mount Laurel, NJ
(856) 316-0600
http://www.trichomeanalytical.com

Kristen Goedde
Lab Manager

Tom Barkley
Technical Manager

Confident Cannabis
All Rights Reserved
support@confidentcannabis.com
(866) 506-5866



Lic# ISO/IEC 17025:2017 A2LA CERT# 5913.01 // DEA# RT0581098 // NJ HEMP# 34_00077
www.confidentcannabis.com
ND=Not Detected, NR=Not Reported, NT=Not Tested, LOD=Limit of Detection, LOQ=Limit of Quantitation. Action levels reported for contaminants are based upon various state medical high-THC cannabis limits and are used as suggested action levels by Trichome Analytical. Values reported relate only to the product tested and batched under the batch number identified above. Results apply only to the sample as submitted to the laboratory. Trichome Analytical makes no claims as to the efficacy, safety, or other risks associated with any detected or non-detected level of any compounds reported herein. All analytical work is performed using validated methods and in accordance with state and/or federal guidelines. This certificate may only be reproduced in full.



CERTIFICATE OF ANALYSIS

Powered by Confident Cannabis
2 of 2

KannaWorx Industries LLC

49 Mountain View Terrace
Walden, NY 12586
chris@kannaworxindustries.com
(845) 779-1291
Lic. #: HEMP-G-000527

Sample: 210816TRI001.01

Sample Description: 1008

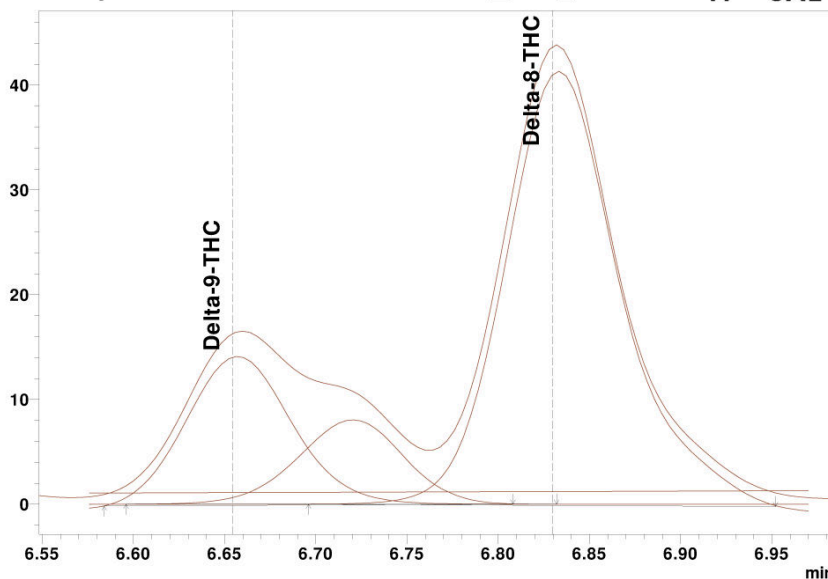
Sample Received: 08/16/2021; Report Created: 08/18/2021;

PG D8 Flower

Plant, Flower - Cured



Cannabinoids supporting information
THC Chromatogram
Method: UHPLC-PDA SOP.102
Sample Filename: 210816TRI001.01_RP1_006 D8D9.TI
**TRI—
CHOME
ANALY—
TI—CAL**



**TRI—
CHOME
ANALY—
TI—CAL**

6000 Commerce Parkway Suite I
Mount Laurel, NJ
(856) 316-0600
<http://www.trichomeanalytical.com>

Kristen Goedde
Lab Manager

Tom Barkley
Technical Manager

Confident Cannabis
All Rights Reserved
support@confidentcannabis.com
(866) 506-5866
www.confidentcannabis.com



ND=Not Detected, NR=Not Reported, NT=Not Tested, LOD=Limit of Detection, LOQ=Limit of Quantitation. Action levels reported for contaminants are based upon various state medical high-THC cannabis limits and are used as suggested action levels by Trichome Analytical. Values reported relate only to the product tested and batched under the batch number identified above. Results apply only to the sample as submitted to the laboratory. Trichome Analytical makes no claims as to the efficacy, safety, or other risks associated with any detected or non-detected level of any compounds reported herein. All analytical work is performed using validated methods and in accordance with state and/or federal guidelines. This certificate may only be reproduced in full.